

salix



DIGARBON ROUND 2

**Decarbonisation Fund for Tertiary
Education in Wales**

~ Cronfa Ddatgarboneiddio Addysg
Drydyddol yng Nghymru



Webinar/Weminar

11 & 28 April, 13 & 20 May 2025



Schedule for today

- Introduction
 - About Salix
 - Introducing Digarbon
 - Overview of interest rates
- Digarbon
 - Eligibility criteria
 - Technical criteria
 - Assessment process
 - How to apply
 - Q&A





Trefn y dydd

- Cyflwyniad
 - Ynghylch Salix
 - Cyflwyno Digarbon
 - Trosolwg o gyfraddau llog
- Digarbon
 - Meini prawf cymhwysedd
 - Meini prawf technegol
 - Y broses asesu
 - Sut i ymgeisio
 - Holi ac ateb

About Salix

-  Supporting energy efficiency and heat **decarbonisation** in the Welsh public sector since 2006
-  Delivering the **Wales Funding Programme**
-  Delivering the **Recycling Fund** scheme
-  Delivering **Digarbon (FY 24/25)**

Ynghylch Salix

-  Cefnogi effeithlonrwydd ynni a **datgarboneiddio gwres** yn sector cyhoeddus Cymru ers 2006
-  Cyflawni **Cynllun Benthyciadau Effeithlonrwydd Ynni (SEELS)** o dan **Raglen Ariannu Cymru**
-  Cyflawni'r cynllun **Cronfa Ailgylchu**
-  Datblygu a chyflawni **Digarbon**

Introducing Digarbon round 2:

Decarbonisation Fund for Tertiary Education in Wales

- £10 million of loan funding
- Targeting the tertiary education sector in Wales
- Soft sector caps 25% to Further education and 75% to Higher education
- 2.15% interest rate
- Objectives:
 - To support implementation of **heat decarbonisation, energy efficiency, renewable energy, and EV & EV charging infrastructure** measures.
 - Funding for the scheme has been provided by Welsh Government to help the **public sector** meet its **ambition** to be **net zero by 2030**.

Cyflwyno Digarbon:

Cronfa Ddatgarboneiddio Addysg Uwch yng Nghymru

- £10 miliwn o gyllid benthyciadau
- Targedu'r sector addysg drydyddol yng Nghymru
- Capiau sector meddal 25% i addysg bellach a 75% i addysg uwch
- Cyfradd llog o 2.15%
- Amcanion:
 - Cefnogi gweithredu mesurau **datgarboneiddio gwres, effeithlonrwydd ynni, ynni adnewyddadwy, a cherbydau trydan a'u seilwaith gwefru.**
 - Llywodraeth Cymru sy'n darparu'r cyllid ar gyfer y cynllun i helpu'r **sector cyhoeddus** gyrraedd ei **uchelgais** i fod yn **sero net erbyn 2030**.

salix



Llywodraeth Cymru
Welsh Government

DIGARBON

**Decarbonisation Fund for Tertiary
Education in Wales**

~ Cronfa Ddatgarboneiddio Addysg
Drydyddol yng Nghymru

www.salixfinance.co.uk



Guidance Notes

Nodiadau Cyfarwyddyd

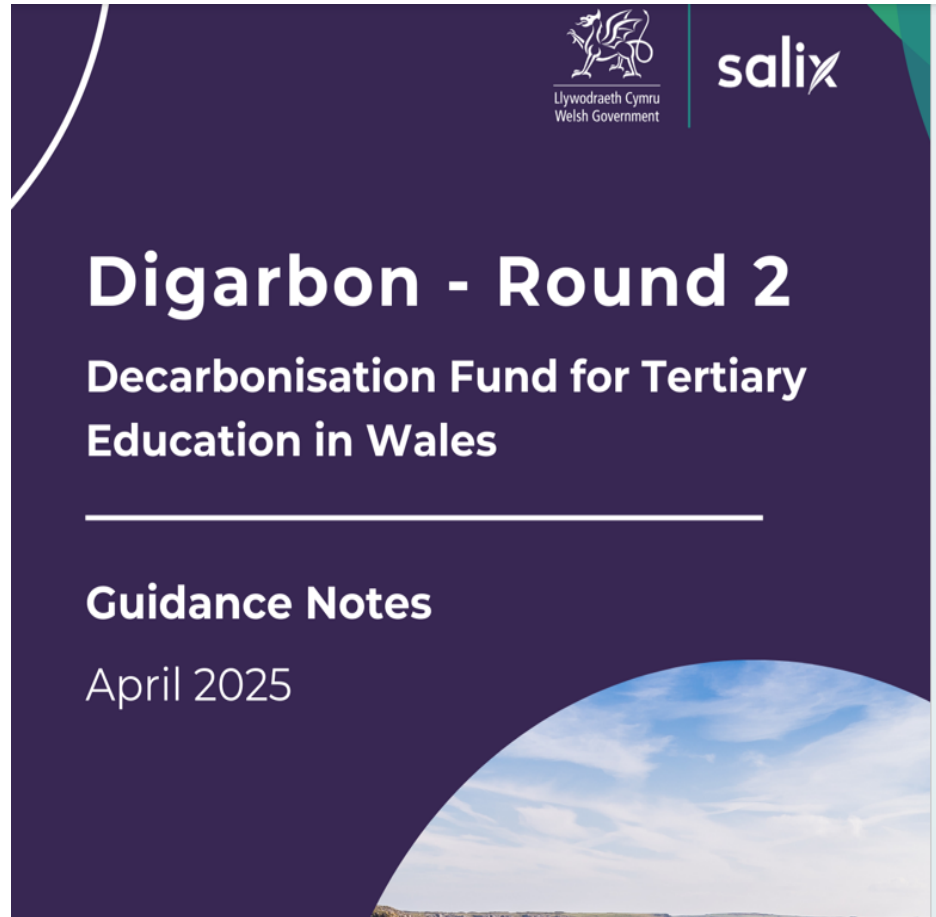


Table of Contents

1. Introduction	3
2. Application value, number, and scope	3
3. Eligibility criteria	4
3.1 Eligible organisations	4
3.2 Eligible buildings	4
3.3 Eligible costs	4
3.4 Subsidy control rules	4
3.5 Additionality criteria	5
4. Technical eligibility	5
4.1 Project types	6
4.1.1 Low Carbon heating system projects	6
4.1.2 Fabric first projects	7
5. Technical criteria	7
6. Responsibilities and competence	8
7. The application process	8
7.1 Announcement and key dates	8
7.2 Submitting your application	8
7.3 Assessment process	9
7.4 Outcome	10
7.5 Awarding funding	10
8. Successful applicants	11
8.1 Reporting requirements	11
8.2 Changes to the project	11
9. Payment and repayment of the loan	11
9.1 Drawing down the loan	11
9.2 Loan interest rates and details	12
9.3 Repaying the loan	12
9.4 Post-completion monitoring and reporting	12
10. Support and advice	12
Appendix 1 – Eligible technologies list	13



Llywodraeth Cymru
Welsh Government

salix

Your partner for
a low carbon future

Eligibility Criteria

- Key changes
- Organisations
 - Buildings
- Eligible applications
 - Technologies
 - Costs
- Project payback

Meini Prawf Cymhwysedd

- Newidiadau allweddol
- Sefydliadau
- Adeiladau
- Technolegau cymwys
- Technolegau
- Costau
- Ad-dalu'r prosiect

Key changes

- Interest rate change from 2.05% to **2.15%**
- Greater focus on heat decarbonisation and fabric first measures
- Soft cap on minimum and maximum application values
 - Minimum application value reduced to £50,000
 - Maximum application value of £2.5m
- No dual scheme funding
- Projects must complete by **31 March 2029**

Newidiadau pwysig

- Newid cyfradd llog o 2.05% i **2.15%**
- Mwy o ffocws ar ddatgarboneiddio gwres a mesurau ffabrig yn gyntaf
- Cap meddal ar isafswm ac uchafswm gwerthoedd cais
- Lleihawyd isafswm gwerth y cais i £50,000
- Uchafswm gwerth cais o £2.5m
- Dim cyllid cynllun deuol
- Mae rhaid i prosiectau cwblhau erbyn **31 Mawrth 2029**

Organisations

- Higher and further education institutions
- Organisations must receive greater than 80% of income from educational activities of which commercial and spin-out enterprises are not included.
- Registered in Wales

Buildings

- Existing non-domestic buildings
- Owned or with long-term lease with at least 10 years remaining
- Savings must be passed to the eligible public body applying for the loan

Sefydliadau

- Sefydliadau addysg uwch ac addysg bellach
- Rhaid bod yn gorff sector cyhoeddus yn unol â'r diffiniad
- Mae'n rhaid i sefydliadau dderbyn mwy nag 80% o incwm o weithgareddau addysgol na chaiff mentrau masnachol a mentrau deillio eu cynnwys.
- Wedi'i gofrestru yng Nghymru

Adeiladau

- Adeiladau annomestig sydd eisoes yn bodoli
- Yn berchen neu prydles hirdymor gydag o leiaf 10 mlynedd ar ôl
- Rhaid pasio'r arbedion i'r corff sector cyhoeddus sy'n ymgeisio am y benthyciad

Technologies

Must include:

- Low carbon heating system and/or fabric first measures, such as building fabric improvements

Additional eligible measures:

- Energy efficiency measures, e.g., LED lighting
- Renewable energy, e.g., solar PV.
- Electric vehicles and charging infrastructure
- Heat distribution systems and emitters
- Enabling works

Costs

- Design, procurement, purchase of equipment & materials, build, install, commissioning
- Project management (capitalised)

Technolegau

Rhaid cynnwys:

- System wresogi carbon isel a/neu fesurau ffabrig yn gyntaf, megis gwella ffabrig yr adeilad

Mesurau cymwys ychwanegol:

- Mesurau effeithlonrwydd ynni, e.e., goleuadau LED
- Ynni adnewyddadwy, e.e. solar PV.
- Cerbydau trydan a seilwaith gwefru
- Systemau dosbarthu gwres ac allyrwyr
- Galluogi gwaith

Costau

- Dylunio, caffael, prynnu offer a deunyddiau, adeiladu, gosod, comisiynu
- Rheoli prosiect (wedi'i gyfalafu)

Application project types

Project Type	Eligible measures	Eligible criteria
Low carbon heating system project	Installation of low carbon heating (only)	Applications must include at least low carbon heating or fabric first measures to be eligible
	Or in combination with fabric first measures	
	Or in combination with energy efficiency, renewables and electric vehicles measures	
Fabric first project	Installation of fabric first (only)	
	Or in combination with energy efficiency, renewables and electric vehicles	

Mathau o brosiectau cais

Fath o Brosiect	Technolegau Cymwys	Meini Prawf Cymhwyster
Prosiect system wresogi carbon isel	Gosod System Gwresogi Carbon Isel (yn unig)	Rhaid i geisiadau gynnwys o leiaf gwresogi carbon isel neu fesurau ffabrig yn gyntaf i fod yn gymwys
	Neu mewn neu mewn cyfuniad â mesurau Ffabrig Gyntaf	
	Neu mewn neu mewn cyfuniad â Effeithlonrwydd ynni, Ynni Adnewyddadwy a Cherbydau Trydan	
Fabric first project	mesurau Ffabrig Gyntaf (yn unig)	
	Neu mewn neu mewn cyfuniad â Effeithlonrwydd ynni, Ynni Adnewyddadwy a Cherbydau Trydan	



Llywodraeth Cymru
Welsh Government

salix

Your partner for
a low carbon future

Technical criteria

- Carbon cost metric
 - Project payback
- Whole building and fabric first approach

Meini prawf technegol

- Metrig cost carbon
- Ad-daliad y prosiect
- Dull adeilad cyfan a ffabrig yn gyntaf

Carbon cost metric

- Automatically calculated in the application form Measure Details tab
- No threshold for project eligibility
- £550 tCO₂e is the maximum carbon cost deemed effective value for money. Where exceeded, applications must provide reasoning
- Application form calculates loan value at £550 tCO₂e threshold

Metrig cost carbon

- Wedi'i gyfrifo'n awtomatig yn y tab Manylion Mesur ar y ffurflen gais
- Dim trothwy ar gyfer cymhwysedd prosiect
- £550 tCO₂e yw uchafswm y gost carbon a ystyrir yn werth effeithiol am arian. Pan fo'n fwy na hynny rhaid i geisiadau roi rhesymau
- Mae'r ffurflen gais yn cyfrifo gwerth y benthyciad ar y trothwy o £550 tCO₂e

Project payback

- No technical payback calculation based on financial savings
- Repayment plan will be agreed between applicant and Salix
- Loan must be repaid in full, including interest, by 31 October 2049

Ad-daliad y prosiect

- Dim cyfrifiadau ad-dalu technegol yn seiliedig ar arbedion ariannol
- Cynllun ad-dalu i'w gytuno rhwng yr ymgeisydd a Salix
- Rhaid ad-dalu'r benthyciad yn llawn, gan gynnwys llog, erbyn 31 Hydref 2049

Whole building & fabric first approach

‘Whole building’

- Comprising energy conservation measures and others which reduce the heat or electrical demand

‘Fabric first’

- Improving thermal performance by prioritising improvements to the building fabric to the level appropriate for buildings listed in the application form

Dull adeilad cyfan a ffabrig yn gyntaf

‘Adeilad cyfan’

- Yn cynnwys mesurau gwarchod ynni ac eraill sy’n lleihau’r galw am wres neu drydan

‘Ffabrig yn gyntaf’

- Gwella perfformiad thermol drwy flaenoriaethu gwelliannau i ffabrig yr adeilad i lefel sy’n briodol ar gyfer yr adeiladau a restrir yn y ffurflen gais

Low carbon heating measures

Specific technical supporting evidence is required for the low carbon heating system project type, including:

- **End-of-life evidence** for the fossil fuel heating plant.
- **Site surveys** confirming emitter and pipework sizing.
- **Peak heat loss calculations** to justify system sizing.
- **Schematics** of existing and proposed systems.
- **Manufacturer details and data sheets** for all measures.

Mesurau gwresogi carbon isel

Mae angen tystiolaeth ategol dechnegol benodol ar gyfer y math o brosiect system wresogi carbon isel, gan gynnwys:

- **Tystiolaeth diwedd oes** ar gyfer y gwaith gwresogi tanwydd ffosil.
- **Arolygon safle** yn cadarnhau maint yr allyrrydd a phibellau.
- **Cyfrifiadau colli gwres brig** i gyfiawnhau maint y system.
- **Sgemateg** systemau presennol ac arfaethedig.
- **Manylion y gwneuthurwr a thafleenni data** ar gyfer pob mesur.

Fabric first measures

Fabric first measures can be installed as part of a low carbon heating system project or as a standalone fabric first project type.

Requirements focus on demonstrating preparation for future low carbon heating installation.

Applicants need to evidence:

- **Existing heating system**
- **System feasibility**
- **Options appraisal**

Mesurau ffabrig gyntaf

Gellir gosod mesurau ffabrig yn gyntaf fel rhan o brosiect system wresogi carbon isel neu fel math o brosiect ffabrig cyntaf annibynnol.

Mae'r gofynion yn canolbwyntio ar ddangos y paratodau ar gyfer gosodiadau gwresogi carbon isel yn y dyfodol.

Mae angen i ymgeiswyr ddangos tystiolaeth o:

- **System wresogi bresennol**
- **Dichonoldeb system**
- **Arfarniad opsiynau**

Supporting measures for low carbon transition

The scheme supports measures that facilitate the transition to low carbon heating, enhance energy efficiency, and increase renewable energy capacity.

Must be installed in the same buildings as either low carbon heating or fabric first measures

Example measures:

- Energy efficiency measures, e.g., LED lighting
- The installation and upgrade of heat distribution systems and emitters, in preparation for a specified low carbon heating system
- Renewable energy, e.g., solar PV
- Electric vehicles and electric vehicles charging infrastructure

Mesurau ategol am trawsnewid carbon isel

Mae'r cynllun yn cefnogi mesurau sy'n hwyluso'r newid i wresogi carbon isel, gwella effeithlonrwydd ynni, a chynyddu capasiti ynni adnewyddadwy.

Rhaid ei osod yn yr un adeiladau â mesurau gwresogi carbon isel neu ffabrig yn gyntaf.

Mesurau enghreifftiol:

- Mesurau effeithlonrwydd ynni, e.e., goleuadau LED
- Gosod ac uwchraddio systemau dosbarthu gwres ac allyrwyr, i baratoi ar gyfer system wresogi carbon isel benodedig
- Ynni adnewyddadwy, e.e., solar PV
- Isadeiledd gwefru cerbydau trydan a cherbydau trydan

New energy generation projects

- Any projects that include energy generation assets such as solar PV, wind turbine etc.
- Applicants must submit a **performance management plan (PMP)**.
- Demonstrate effective monitoring and metering of the system throughout its lifetime.
- Further guidance can be found in Appendix 2 of the guidance notes

Prosiectau cynhyrchu egni newydd

- Unrhyw brosiectau sy'n cynnwys mesurau cynhyrchu ynni megis solar PV, tyrbin gwynt ac ati.
- Rhaid i ymgeiswyr gyflwyno **cynllun rheoli perfformiad (PMP)**
- Dangos bod y system yn cael ei monitro a'i mesur yn effeithiol
- Ceir arweiniad pellach yn Atodiad 2 y nodiadau canllaw



Llywodraeth Cymru
Welsh Government

salix

Your partner for
a low carbon future

Assessment process

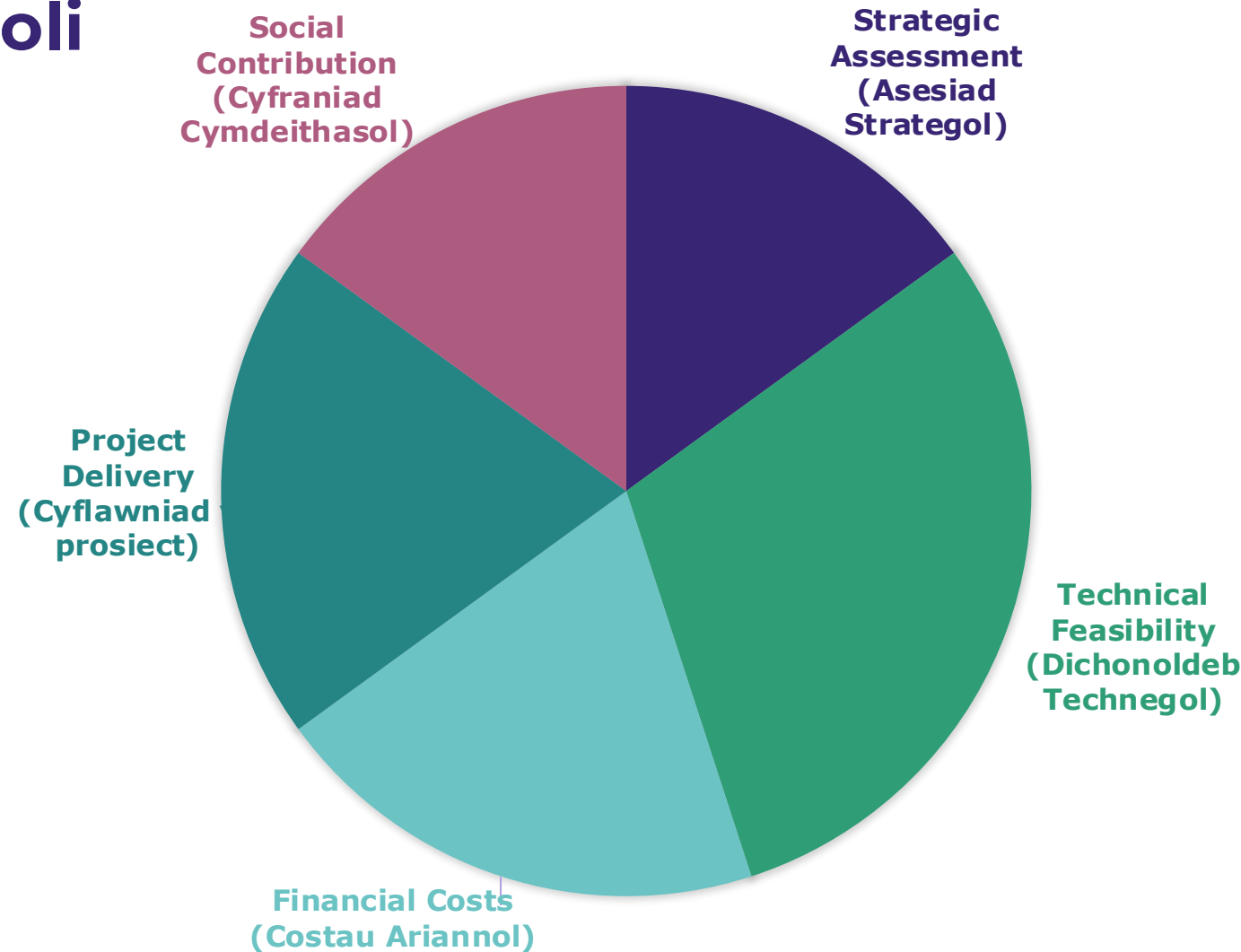
- Weighted criteria
- Social contribution

Y broses asesu

- Meini prawf wedi'u pwysoli
- Cyfraniad cymdeithasol

Weighted criteria Meini prawf wedi'u pwysoli

Strategic Assessment (Aseiad Strategol)	15%
Technical Feasibility (Dichonoldeb Technegol)	30%
Financial Costs (Costau Ariannol)	20%
Project Delivery (Cyflawniad y prosiect)	20%
Social Contribution (Cyfraniad Cymdeithasol)	15%



Social contribution

Based on Well-being of Future Generations (Wales) Act and the Future Generations Framework for projects

Four sections:

- Low-carbon economy
- Community involvement and empowerment
- Promoting environmental and public health
- Welsh heritage and global citizenship

Cyfraniad cymdeithasol

Yn seiliedig ar Ddeddf Llesiant Cenedlaethau'r Dyfodol (Cymru) a Fframwaith Cenedlaethau'r Dyfodol ar gyfer prosiectau

Pedair rhan:

- Economi carbon-isel
- Cyfranogiad a grymuso cymunedol
- Hybu iechyd cyhoeddus ac amgylcheddol
- Treftadaeth Cymru a dinasyddiaeth byd-eang



Llywodraeth Cymru
Welsh Government

salix

Your partner for
a low carbon future

How to apply

- Steps
 - Project governance
 - Application form
- Supporting documents

Sut i ymgeisio

- Camau
- Llywodraethu y prosiect
- Ffurflen gais
- Dogfennau ategol

How to apply

- Application window opens on **22 May** and closes on **7 August**
- Applications will be made through the application portal on the Salix website
- You need to register for an account to the application portal
- Applications must be made by an individual from the eligible organisation. Applications made by external parties will be rejected

Sut i ymgeisio

- Bydd y ffenest ymgeisio yn agor ar **22 Mai** ac yn cau ar **7 Awst**
- Gwneir ceisiadau drwy'r porth ymgeisio ar wefan Salix
- Mae angen i chi gofrestru ar gyfer cyfrif i'r porth ymgeisio
- Rhaid i geisiadau gael eu gwneud gan unigolyn cymwys o'r sefydliad. Gwrthodir ceisiadau gan bartïon allanol

Project governance

- **Main contact** - this is the individual overseeing the project on a day-to-day basis, responsible for reporting and frequent communication with our team at Salix.
- **Authorising official** - an individual in a position of authority at your organisation who can approve and sign official and legal documentation associated with the project.
 - Need to sign the authorising official and counter fraud declarations confirming compliance with the scheme criteria.
- **Finance contact** - an individual in your finance team who will be responsible for the accurate allocation of funding and agreeing the loan amortisation schedule.

salixfinance.co.uk

Llywodraethu prosiect

- **Prif gyswllt** - dyma'r unigolyn sy'n goruchwylio'r prosiect o ddydd i ddydd, sy'n gyfrifol am adrodd a chyfathrebu cyson gyda'n tîm yn Salix.
- **Swyddog awdurdodi** - unigolyn mewn safle o awdurdod yn eich sefydliad a all gymeradwyo a llofnodi dogfennaeth swyddogol a chyfreithiol sy'n gysylltiedig â'r prosiect.
 - Angen arwyddo'r datganiadau awdurdodi swyddogol a gwrth-dwyll yn cadarnhau cydymffurfiaeth gyda meini prawf y cynllun.
- **Cyswllt cyllid** - unigolyn yn eich tîm cyllid a fydd yn gyfrifol am ddyrannu cyllid yn gywir a chytuno ar amserlen amorteiddio'r benthyciad.



Application form

- Step 1 Introduction
- Step 2a Building Project Design
- Step 2b EV Proposal
- Step 3a Site Details
- Step 3b Building Details
- Step 3c Heating System
- Step 4 Measure Details
- Step 5a Project Governance
- Step 5b Social Contribution
- Step 6 Loan Amortisation

Ffurflen gais

- Cam 1 Cyflwyniad
- Cam 2a Dylunio Prosiect Adeiladu
- Cam 2b Cynnig EV
- Cam 3a Manylion y Safle
- Cam 3b Manylion Adeiladu
- Cam 3c System Wresogi
- Cam 4 Manylion Mesur
- Cam 5a Llywodraethu Prosiect
- Cam 5b Cyfraniad Cymdeithasol
- Cam 6 Amorteiddio Benthyciad

Supporting documents

Documents provided **must** match the information in the application form

- *The Digarbon application form*
- *Cost evidence*
- *Energy saving calculations*
- *Building energy figures*
- *Options appraisal report*
- *Feasibility study*
- *Risk register*
- *Project programme*
- *Authorising Official Declaration*
- *Counter Fraud Declaration*

See Appendix 2 of guidance notes for more information.

Dogfennau ategol

Rhaid darparu dogfennau i gyd-fynd â'r wybodaeth yn y ffurflen gais

- *Ffurflen gais Digarbon*
- *Tystiolaeth o gost*
- *Cyfrifiadau arbedion ynni*
- *Ffigyrau ynni adeiladau*
- *Adroddiad arfarnu opsiynau*
- *Astudiaeth ddichonoldeb*
- *Cofrestr risg*
- *Rhaglen y prosiect*
- *Datganiad Swydddog Awdurdodi*
- *Datganiad Gwrth-dwyll*

Gweler Atodiad 2 y nodiadau cyfarwyddyd am ragor o wybodaeth.

Interest rate & repayment

- 2.15% fixed rate
- Interest and capital repayment made together, annually
- Interest repayments begins in the first financial year from loan drawdown
- Capital repayments begins after project completion
- Loan must be repaid entirely by October 2049

Cyfradd llog ac ad-daliadau

- 2.15% cyfradd sefydlog
- Ad-daliadau llog a chyfalaf wedi'u gwneud gyda'i gilydd, yn flynyddol
- Ad-daliadau llog yn dechrau yn y flwyddyn ariannol gyntaf o'r swm a dynnwyd o'r benthyciad
- Ad-daliadau cyfalaf yn dechrau ar ôl cwblhau'r prosiect
- Rhaid ad-dalu'r benthyciad cyfan erbyn Hydref 2049

Resources available Adnoddau sydd ar gael

The following can be found on the Salix website:
Mae'r canlynol ar wefan Salix:



Frequently Asked Questions
Cwestiynau Cyffredin



Guidance Notes
Nodiadau cyfarwyddyd



Application form
Ffurflen gais



Applicant Journey
Taith yr ymgeisydd



Terms and Conditions
Telerau ac amodau

ANY QUESTIONS?

Queries can be directed to the email below:
Gellir cyfeirio ymholiadau i'r cyfeiriad e-bost isod



wales@salixfinance.co.uk

Or [subscribe to our mailing list](#)
Neu [tanysgrifiwch i'n rhestr bostio](#)

